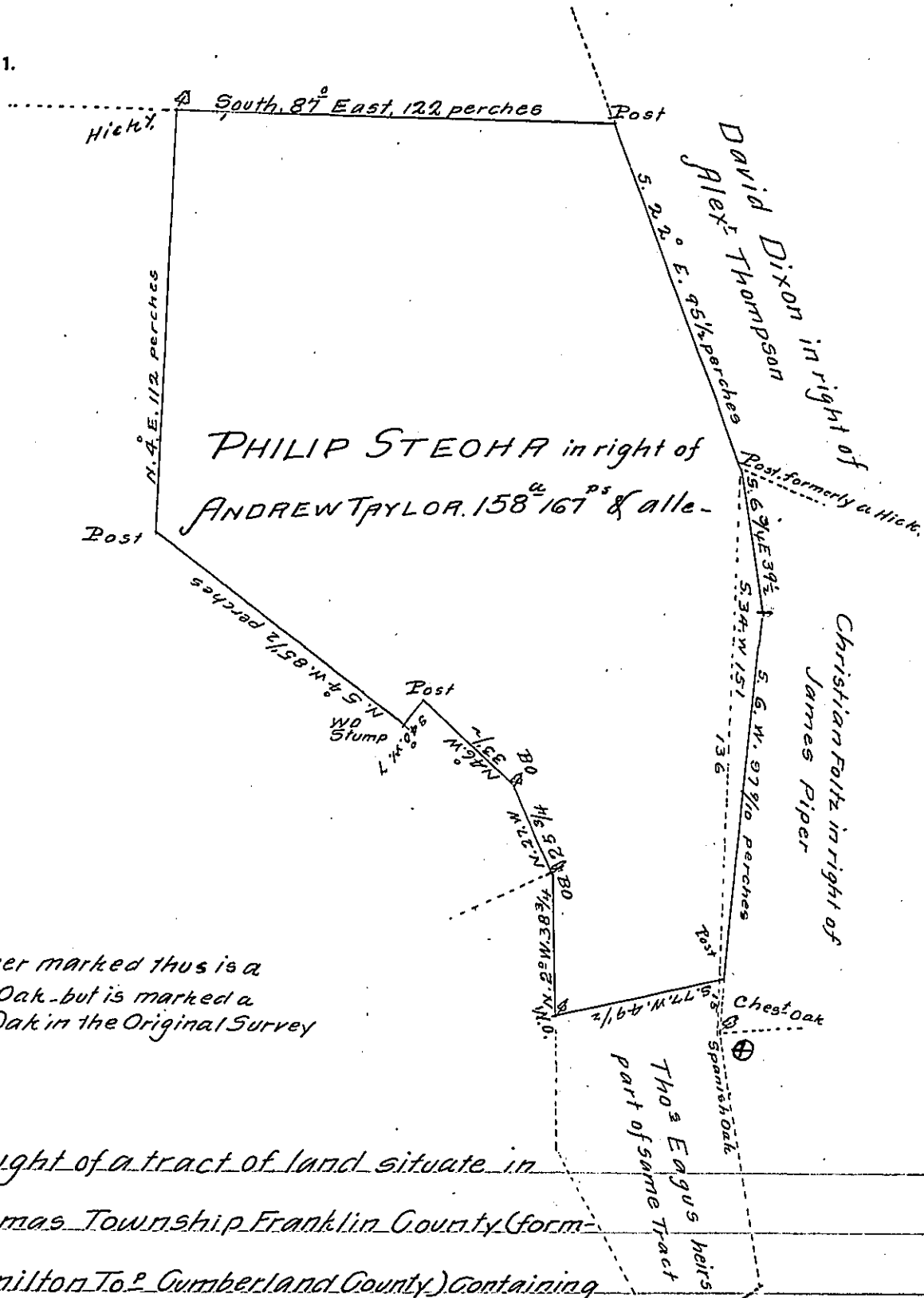


FORM NO. 1.



⊕ The corner marked thus is a Chestnut Oak - but is marked a Spanish Oak in the Original Survey

A Draught of a tract of land situate in St Thomas Township Franklin County (formerly Hamilton To<sup>p</sup> Cumberland County) containing One hundred & fifty-eight acres & One hundred & sixty-seven perches and the allowance of Six per Cent for roads &c. being part of a larger tract of 177 acres 107 perches. Surveyed 26<sup>th</sup> May 1768 in pursuance of an Order of Survey granted to Andrew Taylor for 300 acres dated 17<sup>th</sup> February 1767 N<sup>o</sup> 2811 - Resurveyed as above the 3<sup>d</sup> March 1838 in pursuance of an order of Resurvey of the Board of Property dated 22<sup>d</sup> February 1838 per Samuel M. Armstrong

To John Taylor Esquire, Surveyor General } Deputy Surveyor

Note - The lines S. 67 1/4 E. 39 1/2 & S. 6° W. 97 1/2 are the only marked lines on the ground. the <sup>Dotted</sup> line S. 23 1/4 W. 151 (its present bearing) appears to have been only an imaginary line as no marks could be found to corroborate such a line. - S. M. A

IN TESTIMONY that the above is a copy of the original remaining on file in the Department of Internal Affairs of Pennsylvania, made conformably to an Act of Assembly approved the 16th day of February 1833, I have hereunto set my hand and caused the Seal of said Department to be affixed at Harrisburg, this sixth day of February 1907

*Isaac V. Brown*  
Secretary of Internal Affairs.